

# sunvcmco

## SV5-54HTB 415~435W

- Suitable for Distribution Market
- Simple design embodies modern style
- Better energy generation performance
- High-quality module guarantees long-term reliability



15-year Warranty for  
Materials and Processing



25-year Warranty for Extra  
Linear Power Output

### Complete System and Product Certifications

IEC 61215, IEC 61730, UL 61730

ISO9001:2015: ISO quality Management System

ISO14001: 2015: ISO Environment Management System

ISO45001: 2018: Occupational Health and Safety

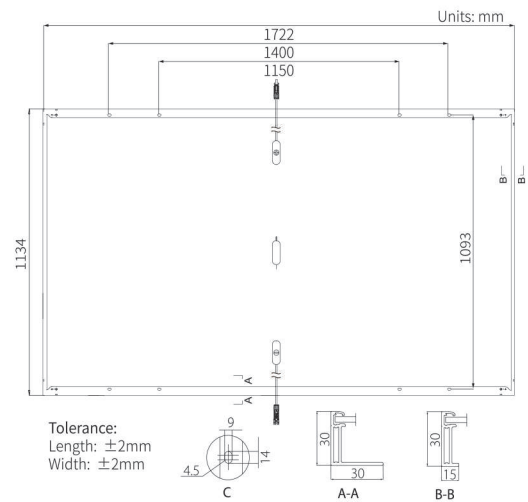
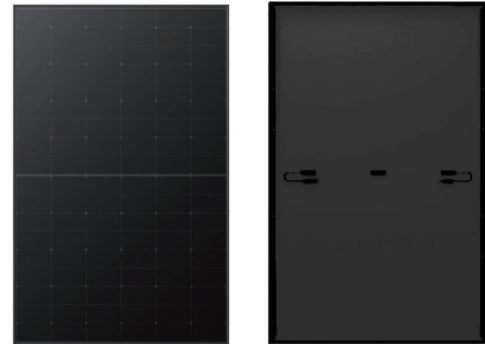
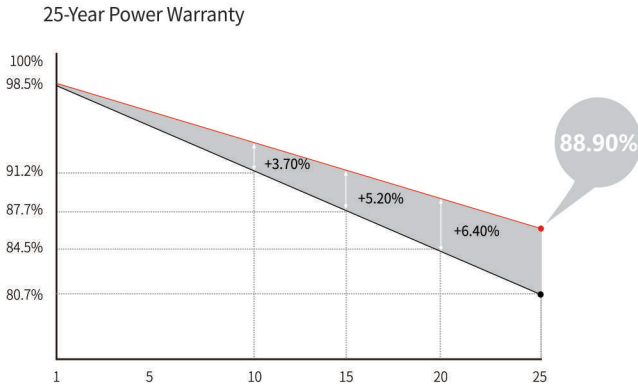
IEC62941: Guideline for module design qualification and type approval

# sunvcmco



<b>22.8%</b> MAX MODULE EFFICIENCY	<b>0~3%</b> POWER TOLERANCE	<b>&lt;1.5%</b> FIRST YEAR POWER DEGRADATION	<b>0.40%</b> YEAR 2-25 POWER DEGRADATION
--	-----------------------------------	--	--

## Additional Value



## Mechanical Parameters

Cell Orientation	108 (6×18)
Junction Box	IP68, three diodes
Output Cable	4mm <sup>2</sup> , $\pm 1200$ mm length can be customized
Glass	Single glass, 3.2mm coated tempered glass
Frame	Anodized aluminum alloy frame
Weight	20.8kg
Dimension	1722×1134×30mm
Packaging	36pcs per pallet / 216pcs per 20' GP / 936pcs per 40' HC

## Electrical Characteristics

STC : AM1.5 1000W/m<sup>2</sup> 25°C

NOCT : AM1.5 800W/m<sup>2</sup> 20°C 1m/s

Test uncertainty for Pmax:  $\pm 3\%$

Module Type	SV5-54HTB-435W		SV5-54HTB-440W		SV5-54HTB-445W	
	STC	NOCT	STC	NOCT	STC	NOCT
Maximum Power (Pmax/W)	435	325	440	329	445	333
Open Circuit Voltage (Voc/V)	39.63	37.21	39.83	37.40	40.03	37.58
Short Circuit Current (Isc/A)	14.08	11.37	14.15	11.43	14.23	11.49
Voltage at Maximum Power (Vmp/V)	33.36	30.44	33.56	30.62	33.76	30.81
Current at Maximum Power (Imp/A)	13.05	10.68	13.12	10.75	13.19	10.82
Module Efficiency(%)	22.3		22.5		22.8	

## Operating Parameters

Operational Temperature	-40°C ~ +85°C
Power Output Tolerance	0 ~ 3%
Voc and Isc Tolerance	$\pm 3\%$
Maximum System Voltage	DC1500V (IEC/UL)
Maximum Series Fuse Rating	25A
Nominal Operating Cell Temperature	45 $\pm 2$ °C
Protection Class	Class II
Fire Rating	UL type 1 or 2 IEC Class C

## Mechanical Loading

Front Side Maximum Static Loading	5400Pa
Rear Side Maximum Static Loading	2400Pa
Hailstone Test	25mm Hailstone at the speed of 23m/s

## Temperature Ratings (STC)

Temperature Coefficient of Isc	+0.050%/°C
Temperature Coefficient of Voc	-0.230%/°C
Temperature Coefficient of Pmax	-0.290%/°C